

# CERTIFICATE OF LOCATION OF GOVERNMENT CORNER

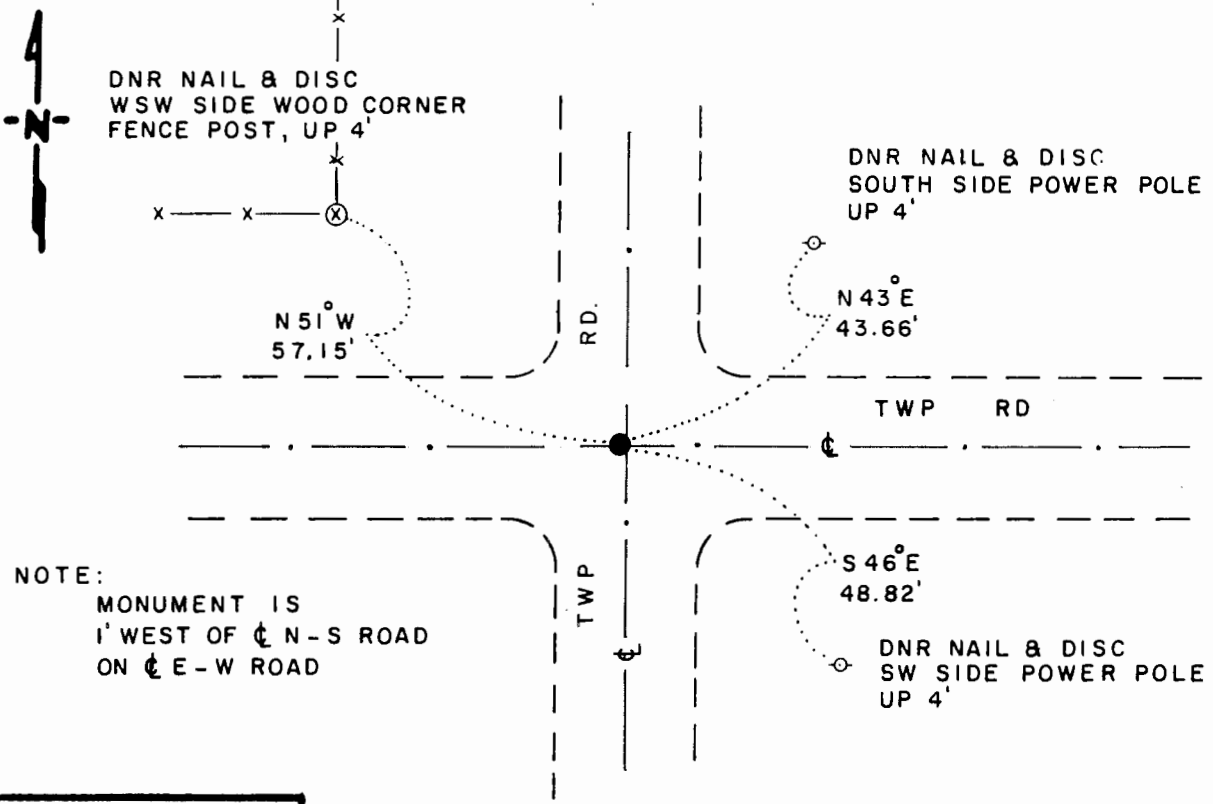
NORTHEAST Corner of Section 7, Township 107 N, Range 39 W, 5<sup>th</sup> P.M.

STATE OF MINNESOTA, County of MURRAY

At the corner location shown on the sketch

- On 10-9-91 found a 12" x 19" x 19" GRANITE STONE, WITH PIECES OF LATH, DOWN 2.5'
- left monument as found,  lowered monument,  removed monument (explain)
- On 10-9-91 placed a 3/4" x 24" REBAR WITH ALUMINUM CAP STAMPED "DNR SURVEY MARKER", OVER STONE, DOWN 0.4'

### SKETCH OF REFERENCE TIES



NOTE:  
MONUMENT IS  
1' WEST OF  $\epsilon$  N-S ROAD  
ON  $\epsilon$  E-W ROAD

1983 MURRAY COUNTY  
COORDINATE SYSTEM  
N = 189,936.889  
E = 553,485.679

BEARINGS OBSERVED WITH COMPASS

Statement of evidence relative to this corner location is on back of page

J.B.M. 11-19-91  
WMA 00065.00.00.01

I hereby certify that this document and the data contained herein was prepared by me or under my direct supervision.

Bruce W. Sheppard 12-2-91  
SIGNATURE DATE

Registration No. 17003  
 Land Surveyor,  Professional Engineer  
 County Surveyor,  County Engineer

OFFICE OF THE COUNTY RECORDER  
County of MURRAY

I hereby certify that this document was filed in the Co. Recorders office at \_\_\_\_\_ M. on the \_\_\_\_\_ day of \_\_\_\_\_ A.D., 19\_\_\_\_  
County Recorder James V. Johnson  
By DEC 4 1991, Deputy

DOCUMENT NO. \_\_\_\_\_

Northeast Corner of Section 7, Township 107 North, Range 39 West

The DNR Bureau of Engineering contacted the following for survey information:

Minnesota Secretary of State's Office  
Murray County Recorder's Office  
Murray County Highway Engineer's Office

- 1861 U.S. General Land Office notes obtained from the Secretary of State's Office show the corner marked with pits and mound.
- 1991 October, DNR Bureau of Engineering hired a backhoe to dig for evidence of a monument at corner. Found a 12" by 19" by 19" granite stone down 2.5 feet with pieces of lath next to it. The stone was found to be:  
on the center line of an east-west road  
1 foot west of the center line of a north-south road  
2635.84 feet from the north quarter corner of Section 7  
2673.88 feet from the east quarter corner of Section 7

Analysis of the above information led the DNR Bureau of Engineering to conclude that the found granite stone marks the location of the corner.